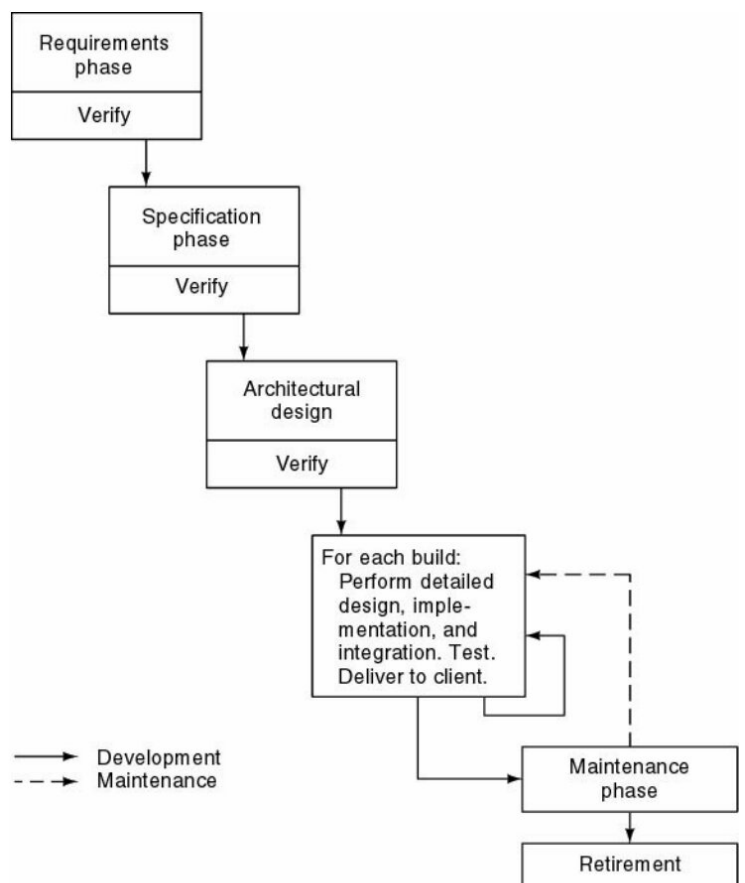


Incremental Model

- Divide project into *builds*

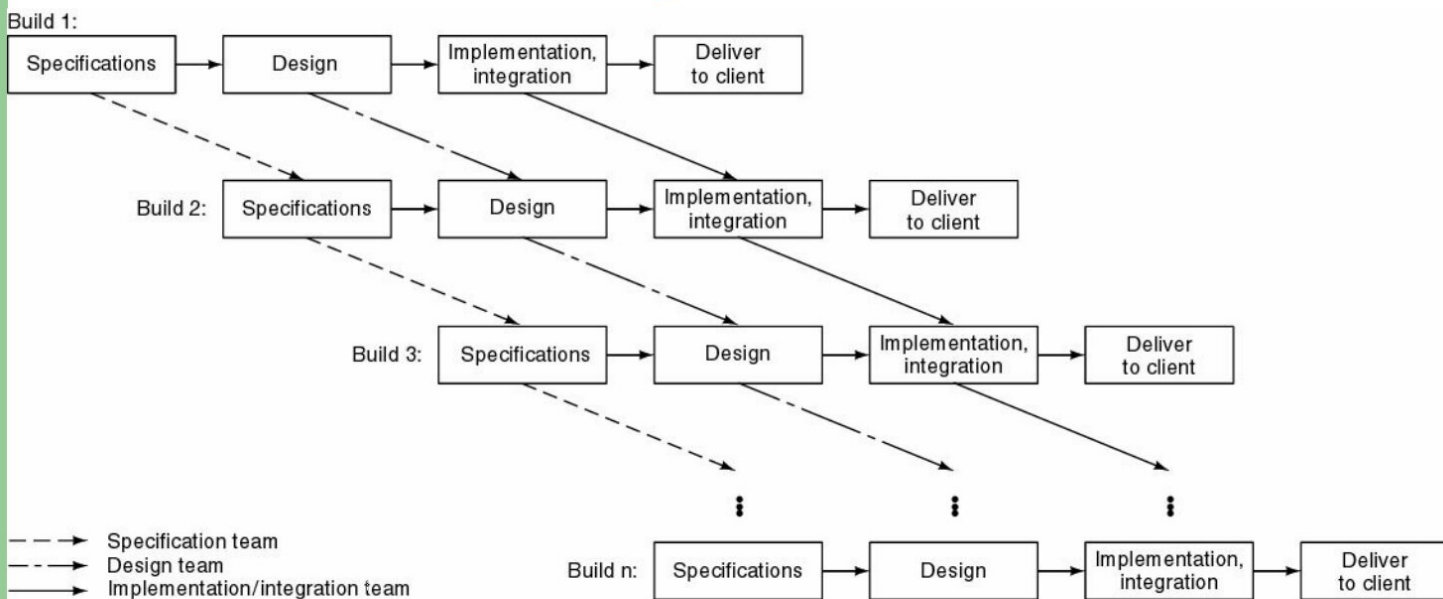


Incremental Model (contd)

- Waterfall, rapid prototyping models
 - Operational quality complete product at end
- Incremental model
 - Operational quality portion of product within weeks
- Less traumatic
- Smaller capital outlay, rapid return on investment
- Need open architecture—maintenance implications
- Variations used in object-oriented life cycle

Incremental Model (contd)

- More risky version—pieces may not fit
 - CABTAB and its dangers



Code a bit, test a bit – CABTAB

- Haphazard undisciplined approach